



LIVE THE BRAAI LIFE

SAFARI CHEF 2 – PIEZO IGNITION REPLACEMENT

Tools required :

Crosshead screwdriver



7mm spanner

Long nose pliers
(optional)

Step 1,

Unscrew burner by twisting in an anti-clockwise rotation.



Step 2,

Remove the three screws indicated by yellow circles. Remove top plate



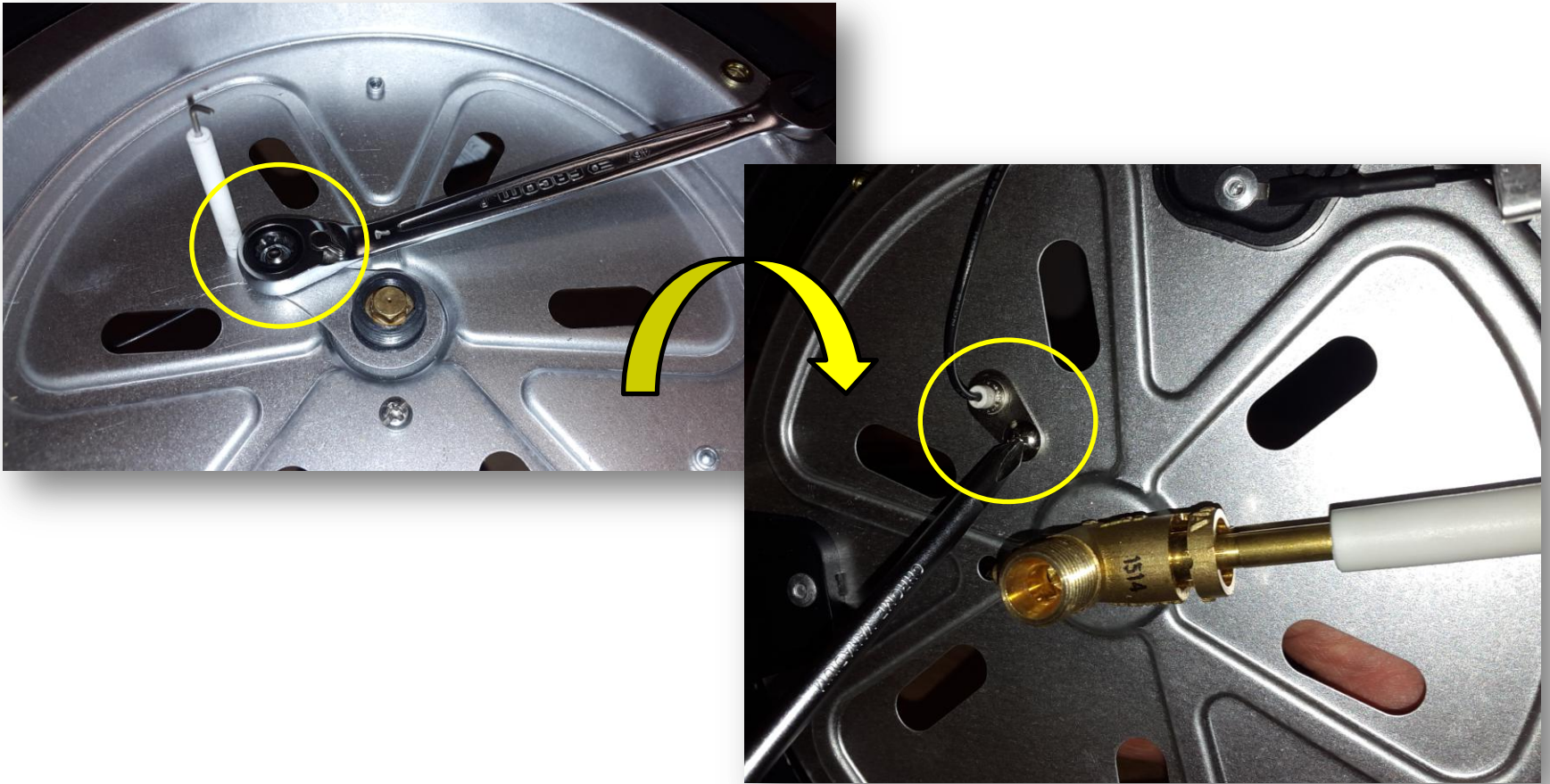
Step 3,

Remove washer.



Step 4,

- Place the spanner over the nut and turn unit over.
- Remove the crosshead screw



Step 5,

Earth collar can then be removed.



Step 6,

Turn the unit over and pull the electrode free.



Step 7,

Remove the piezo retaining cover by sliding it off.



Step 8,

Carefully remove the piezo by pulling up and manoeuvring it free from blue push button.



CAUTION! Risk of shock if the piezo device is compressed.



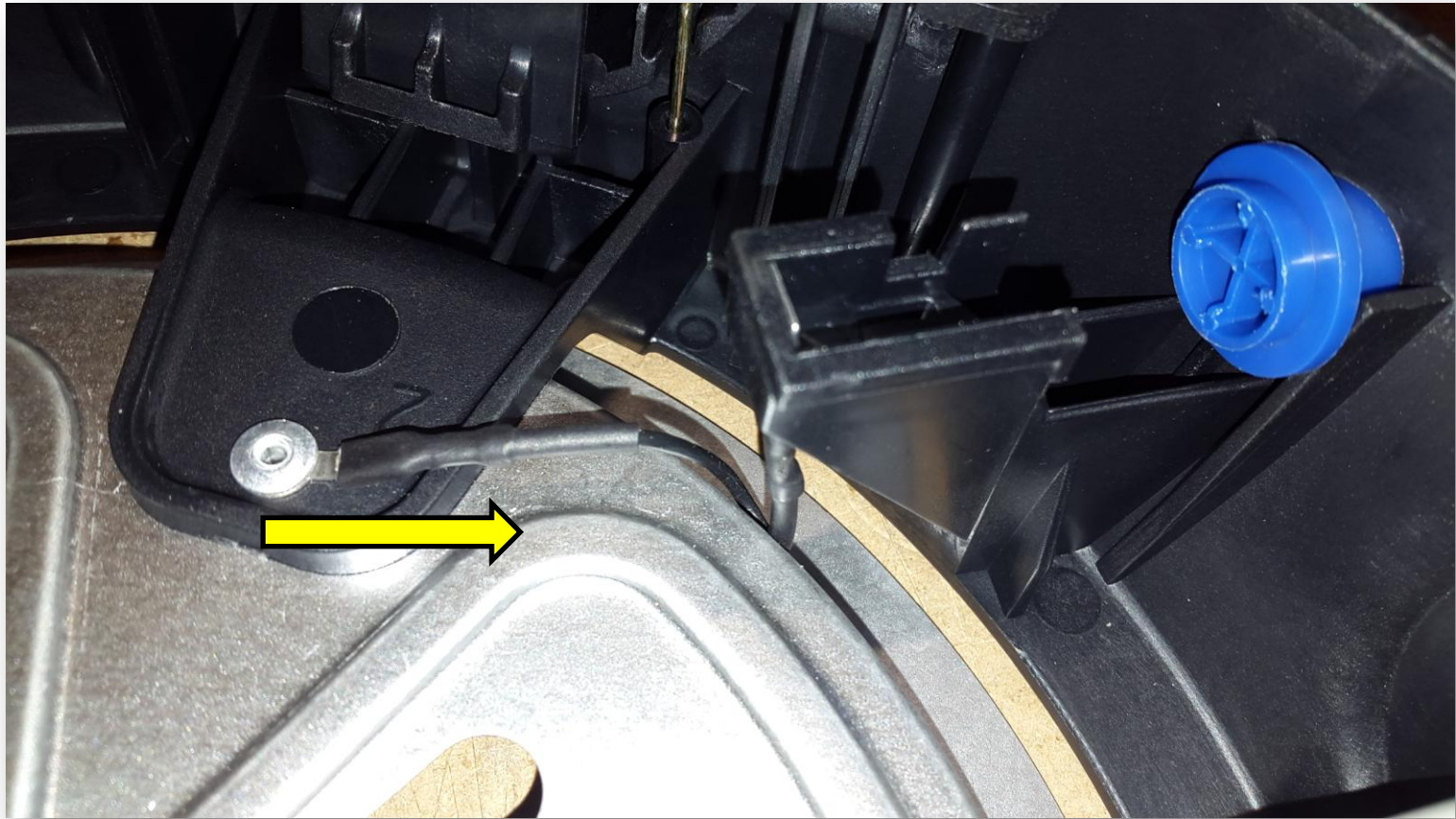
Step 9,

The piezo device can then be released by disconnecting the wire.



Step 10,

Earthing wire is removed by pulling free from riveted spade connection.



Re-fit is the reverse procedure of removal making note of the following...

- Main electrode wire is fed underneath the leg support.
- All cables and connections are in place before testing piezo ignition.
 - All screws are tight.