



LIVE THE BRAAI LIFE

SAFARI CHEF 2 – BURNER COLLAR REPLACEMENT

Tools required :

Crosshead screwdriver



7mm spanner

17mm Socket
(optional)



Step 1,

Unscrew burner by twisting in an anti-clockwise rotation.



Step 2,

Remove the three screws indicated by yellow circles. Remove top plate



Step 3,

Remove washer.

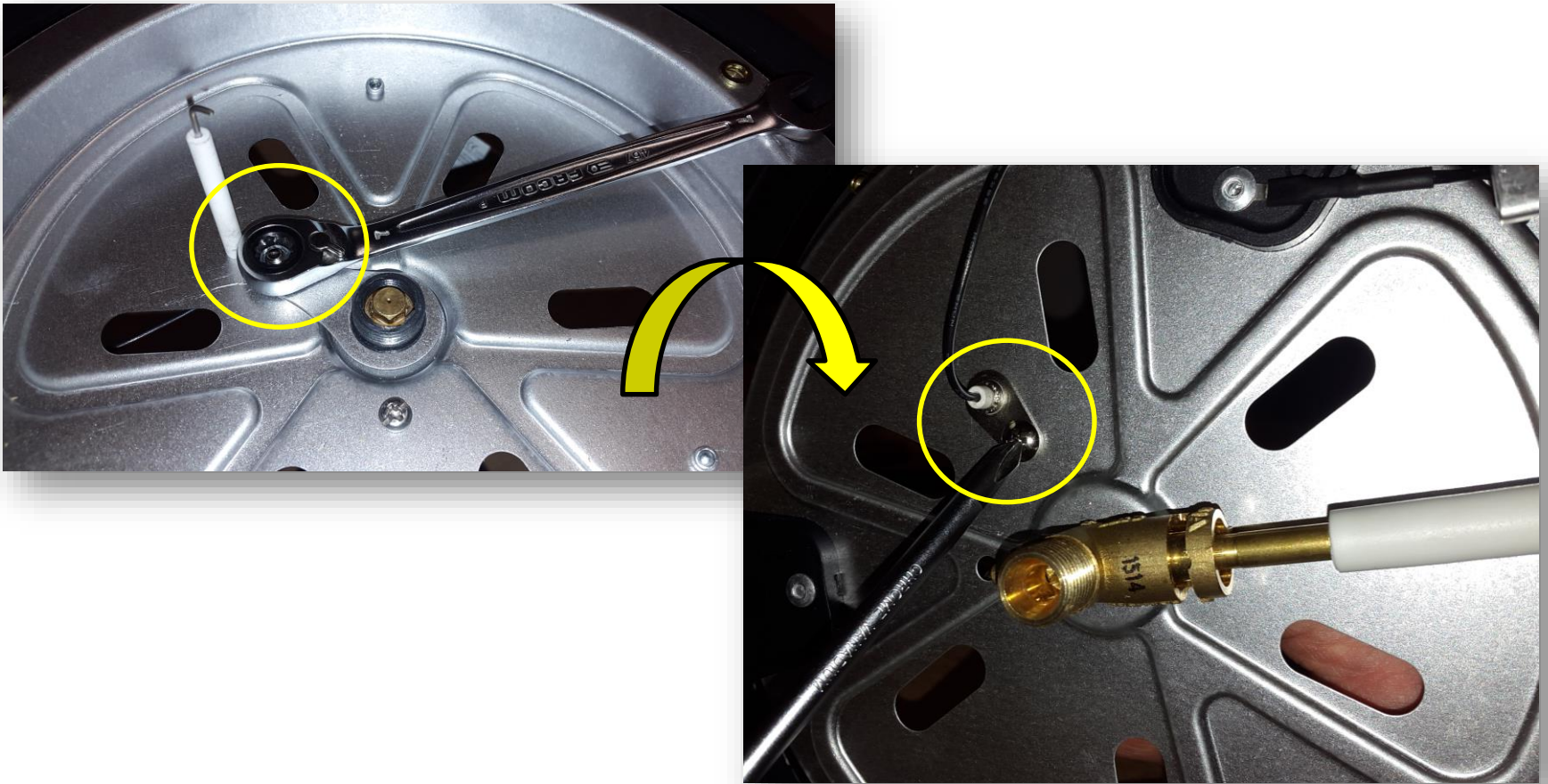


NOTE: Colour of washer may vary.



Step 4,

- Place the spanner over the nut and turn unit over.
- Remove the crosshead screw



Step 5,

Earth collar can then be removed.



Step 6,

Plastic collar can then be removed using the 17mm socket. (Hand tight only)



Re-fit is the reverse procedure of removal making note of the following...

- All screws are tight
- DO NOT over tighten the new plastic collar
- DO NOT over tighten the burner