



LIVE THE BRAAI LIFE

SAFARI CHEF 2 – CONTROL MECHANISM REPLACEMENT

Tools required :

Crosshead screwdriver



7mm spanner

17mm Socket
18mm Socket
(not pictured)



Step 1,

Unscrew burner by twisting in an anti-clockwise rotation.



Step 2,

Remove the three screws indicated by yellow circles. Remove top plate



Step 3,

Remove washer.

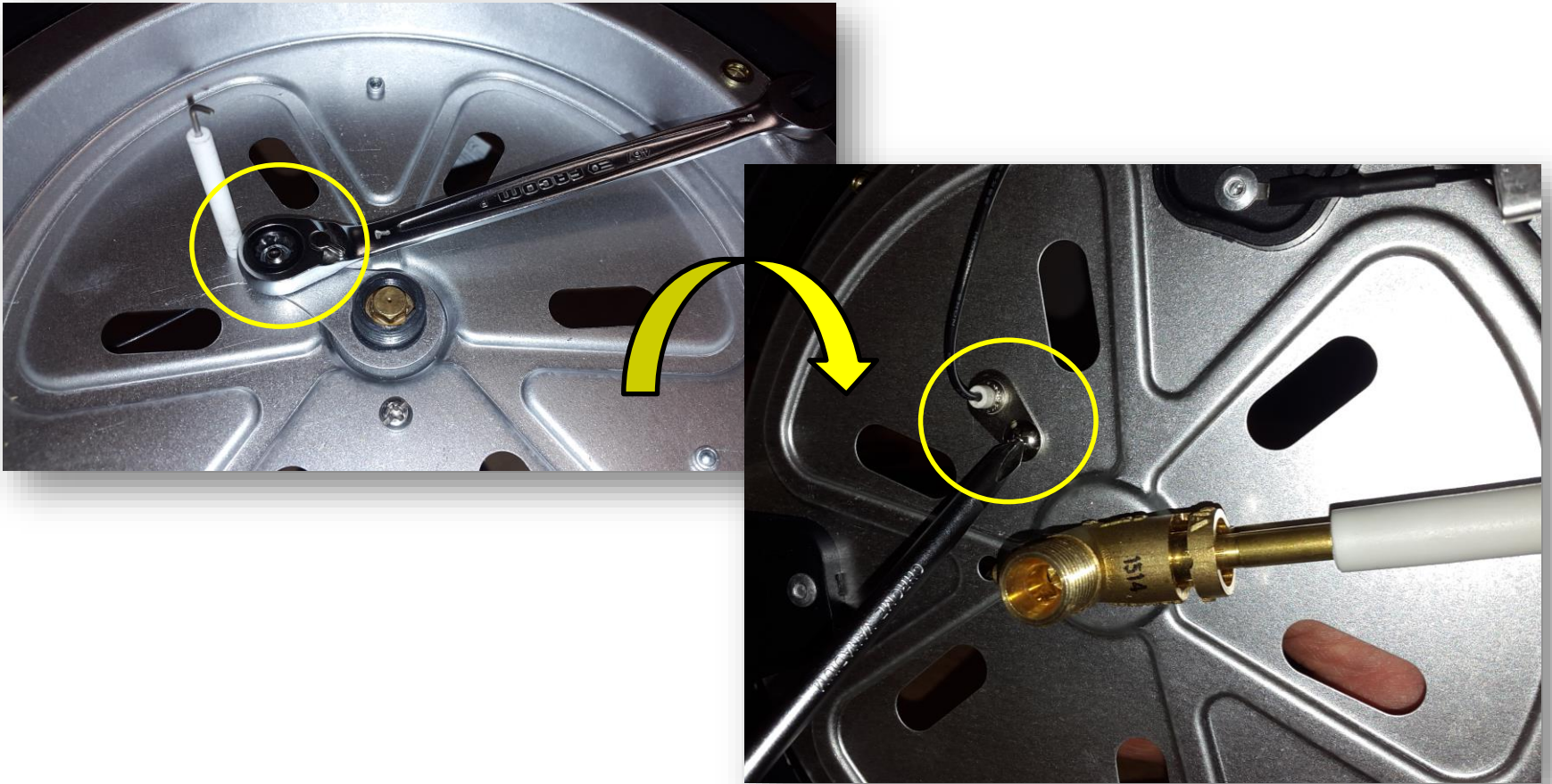


NOTE: Colour of washer may vary.



Step 4,

- Place the spanner over the nut and turn unit over.
- Remove the crosshead screw



Step 5,

Earth collar can then be removed.



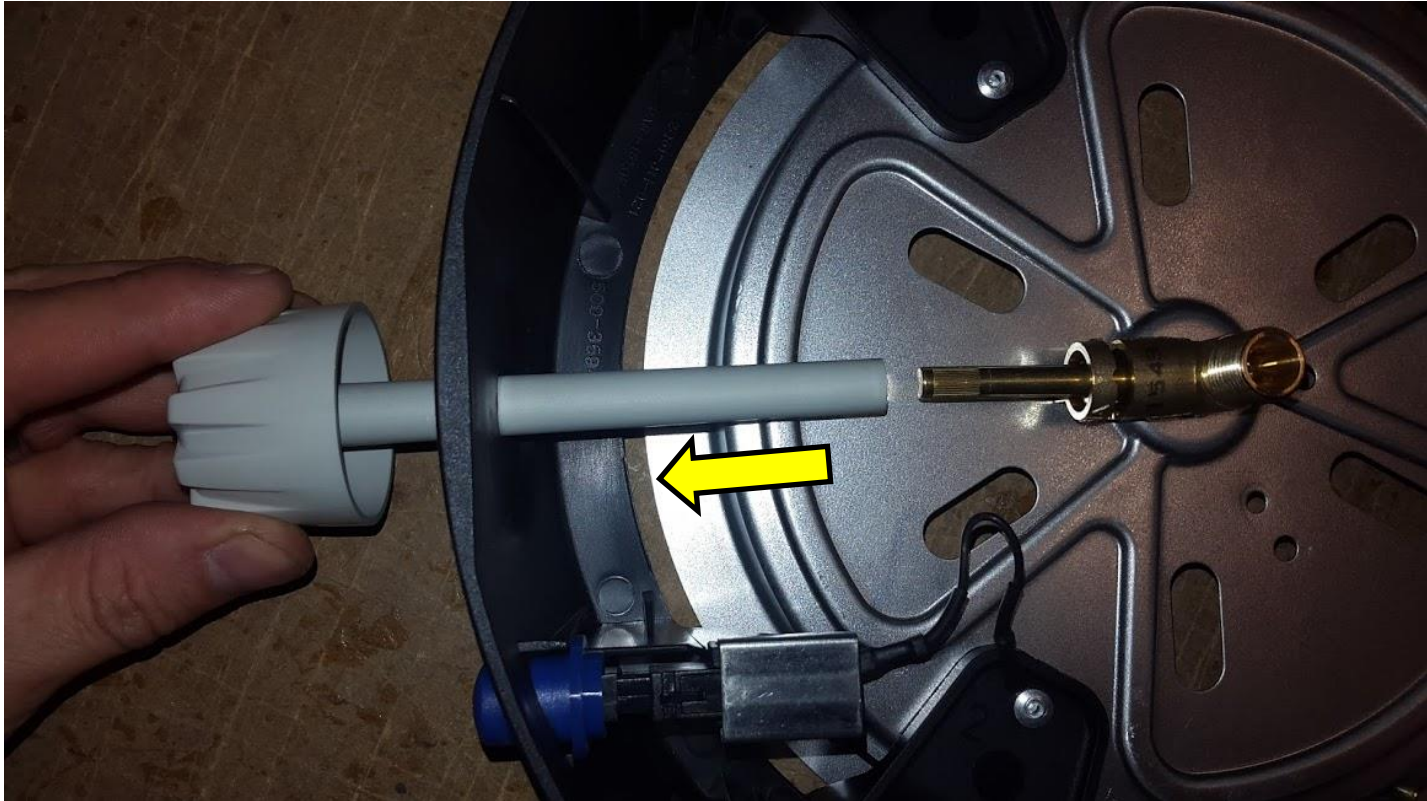
Step 6,

Plastic collar can then be removed using the 17mm socket. (Hand tight only)



Step 7,

Pull the control knob off the brass rod. (some force required)



Step 8,

Fixing nut and screw can then be removed using the 18mm socket and cross head screwdriver.



Step 10,

The control mechanism should then become free to remove.



Re-fit is the reverse procedure of removal making note of the following...

- All screws are tight
- DO NOT over tighten the plastic collar
- DO NOT over tighten the burner